



WHITE-TAIL ACRES

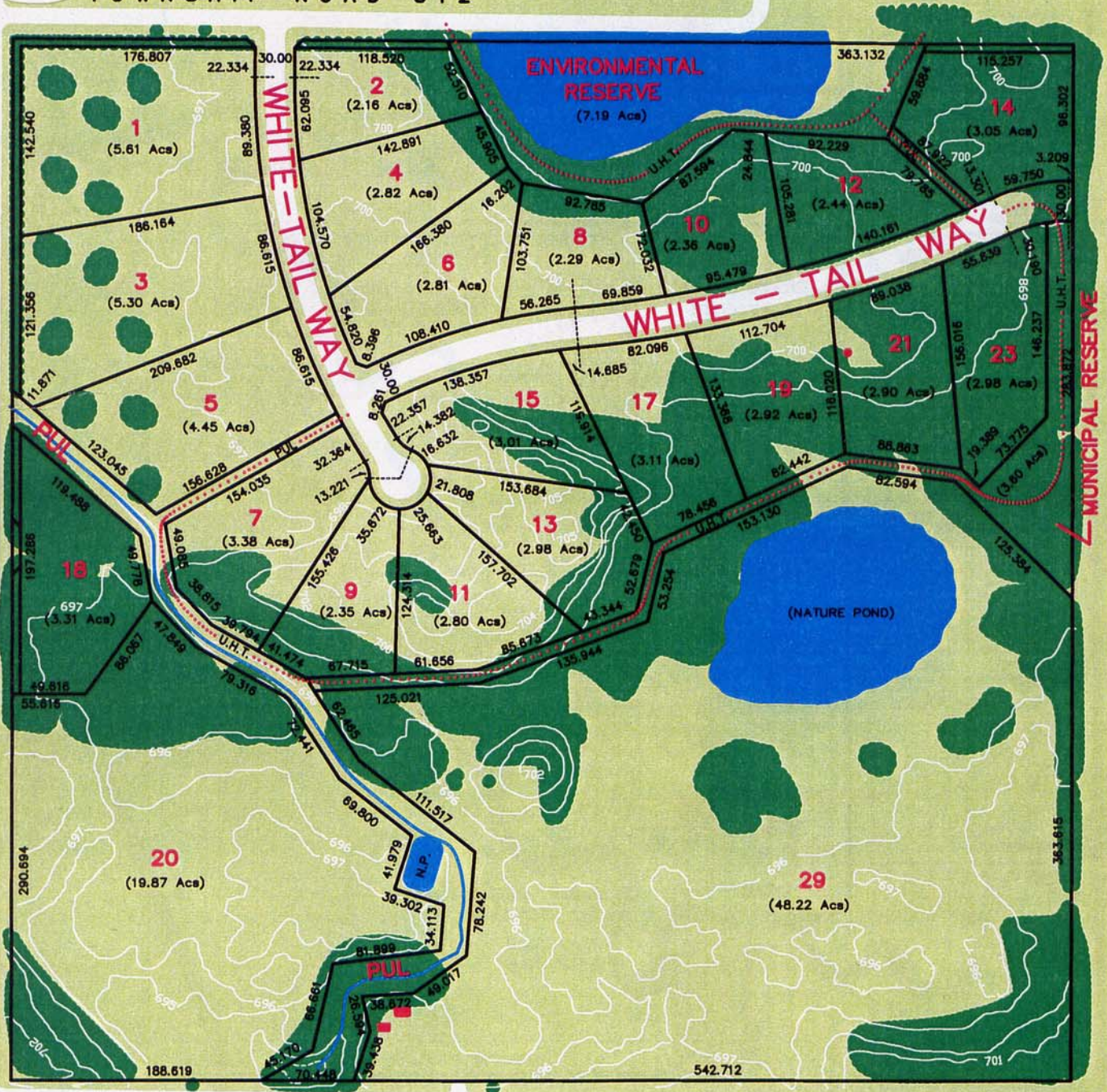
N. W. 1 / 4 SEC. 12, TWP. 51, RGE. 26, W. 4th M.

PARKLAND COUNTY

TOWNSHIP ROAD 512

(FLEMING ROAD)

RANGE ROAD 261



TOWNSHIP ROAD 511A

LEGEND

DISTANCES ARE IN METRES.

UNIMPROVED HIKING TRAIL (U.H.T.)

NATURE POND (N.P.)

N.P.



E & O. E.

(SEE REVERSE)



RE/MAX®

CALL: Ron Pollock

Senior Sales Consultant,

Specializing in Country

Properties West of Edmonton



MULTIPLE LISTING SERVICE
All Parcels Listed MLS

REAL ESTATE

No. 6 Superior Street

Devon, Alberta T0C 1E0

Ph: 987-2077 or 987-2250

Fax: 987-3442 or 987-2268