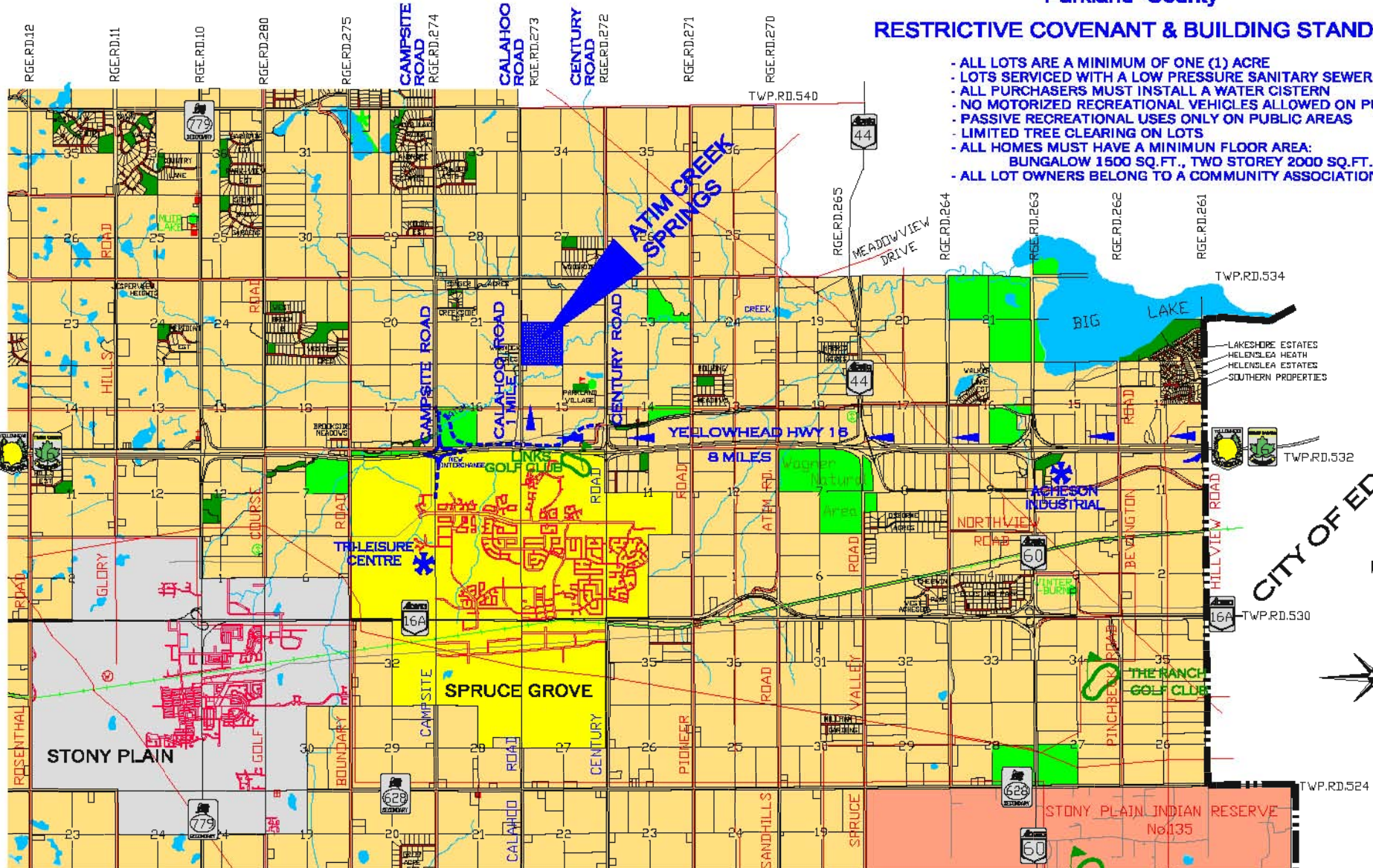


# ATIM CREEK SPRINGS

S.W. 1/4 SEC.22, TWP.53, RGE.27, W.4th M.  
Parkland County

## RESTRICTIVE COVENANT & BUILDING STANDARDS

- ALL LOTS ARE A MINIMUM OF ONE (1) ACRE
- LOTS SERVICED WITH A LOW PRESSURE SANITARY SEWER SYSTEM
- ALL PURCHASERS MUST INSTALL A WATER CISTERN
- NO MOTORIZED RECREATIONAL VEHICLES ALLOWED ON PUBLIC AREAS
- PASSIVE RECREATIONAL USES ONLY ON PUBLIC AREAS
- LIMITED TREE CLEARING ON LOTS
- ALL HOMES MUST HAVE A MINIMUM FLOOR AREA:  
BUNGALOW 1500 SQ.FT., TWO STOREY 2000 SQ.FT., ETC.
- ALL LOT OWNERS BELONG TO A COMMUNITY ASSOCIATION



CITY OF EDMONTON



**Heather McSporrnan-Heil, Agent**  
 16 WESTGROVE DRIVE  
 SPRUCE GROVE, ALBERTA T7X 3X3  
 Bus: (780) 962-8580 Fax: (780) 962-8998  
 E-mail: heather@realestatesprucegrove.com  
 www.realestatesprucegrove.com

**Developer / Broker:**  
**Nor-Chris Holdings Inc.**  
 10585 - 108 STREET  
 EDMONTON, ALBERTA T5H 2Z8  
 Bus: (780) 425-9350 Fax: (780) 425-9351  
 E-mail: nsuvan@norchris.com  
 www.norchris.com



SEPTEMBER 2006  
(see reverse)